

Integration guide to Sant Joan Despí

Benvinguts, Benvingudes,
Bienvenidos, Bienvenidas
Bem-vindos, Bem-vindas,
Welcome,
Bienvenus, Bienvenues,
Bine ati venit,
مرحبا,
欢迎,
Добро пожаловать,
Ongi etorri,
Benvidos, Benvidas



INTEGRATION GUIDE PRESENTATION

The history of Sant Joan Despí has been built with the contributions of people from different origins and backgrounds, from many traditions and cultures, and it continues to do so. This diversity defines us as a city and enriches our identity.

In Sant Joan Despí we receive people from all over the world and, as a city, we guarantee them the right to integration so that they can develop their life projects with personal autonomy and equal opportunities.

The right to admittance, recognized by the Statute of Autonomy of Catalonia, is responsibility of the society that hosts and we in Sant Joan Despí are a welcoming city. A work that we develop from the City Council working together with the entities and the citizens through the Sant Joan Despí Acull i Conviu (Sant Joan Despí Receive and Coexist) Network.

With this guide, we provide newcomers with another tool to help them in their admittance process. In this guide you will find useful information: the resources and services offered by our city and how to access them, the most important procedures, rights and duties, the main social, leisure and cultural aspects of Sant Joan Despí, our framework of coexistence and civic-mindedness...

Through the basic itinerary shown in the guide, we want to facilitate the incorporation of new neighbors to Sant Joan Despí. And continue to make our city an inclusive and cohesive community.

Belén García, Mayoress of Sant Joan Despí

SANT JOAN DESPÍ CITY COUNCIL

📍 Camí del Mig, 9
☎ 93 480 60 00
✉ ajuntament@santjoandespi.cat
💻 sjdespi.cat



¹ <https://portaljuridic.gencat.cat/ca/document-del-pjur/?documentId=520931>



Index

Registration	04
- Citizen Information Office	04
First Integration Service	05
Public Healthcare System	06
Schooling Infants and Children	07
Learning Catalan and Spanish	08
- Adult Education Center
- Arquitecte Jujol	08
- Local Catalan Service	08
Training	09
- Economic Promotion	09
- Adult Education Center
- Arquitecte Jujol	09
- Institut Francesc Ferrer i Guàrdia	09
- Solidarity / Job searching	09
Job searching	10
- Job Club	10
- Employment Agency	10
- Solidarity	10
- Red Cross	10
Degree homologation	11
- Information telephone 012	11
- Education Consortium Service of Barcelona	11
- University Support and Recognition Service	11
Basic social services	12
- Despí Women's Center (CIRD)	12
- Comprehensive Care Service (SAI)	12
Enjoy and participate in the city	14
Telephone numbers of interest	15

Registration

The census is the registry of the population of the municipality.

Registration is a free procedure that allows you to accredit you as a resident of Sant Joan Despí and the State. All people who live in the city have the right to register, regardless of their administrative situation.

The census is necessary to carry out procedures related to immigration law in order to access public services such as education or healthcare.

Non-community foreigners without permanent residence must renew their census every two years. Non-renewal entails the cancellation of the registration in the municipal Census.

You must notify the Census if you return to your country or if you leave Spain.

You will find information on the processing of the census registration form on the website of the Sant Joan Despí City Council in the section of the Citizen Information Office.

For any procedure related to the registration, please contact the Citizen Information Office.



CITIZEN INFORMATION OFFICE

Telephone service

- ☎ 93 480 60 00
- 🕒 From Monday to Friday from 8:30 am to 2 pm and Wednesday afternoons from 4:30 pm to 7 pm
From June 1 to September 30 from 9 am to 2 pm

Where you can find us

- 🏠 OAC (Citizen Information Office)
Sant Joan Despí City Council
- 📍 Camí del Mig, 9
- ☎ 93 480 60 00
- ✉ ajuntament@santjoandespi.cat

We recommend you to contact the Citizen Information Office in advance to receive information about the documentation you must provide. You can also request an appointment at: citaprevia.gestorn.com/sjdespi.

To learn more you can consult

<https://sjdespi.cat/ajuntament/oficina-datencio-la-ciudadania>



First Integration Service

Sant Joan Despí has a First Integration Service for newly arrived persons.

This service offers interviews and admittance sessions where the different services of the city are explained and useful information is given.

In addition, courses of **Knowledge of the surrounding and the Catalan Society** are organized periodically to help you better understand the city and its culture.

It also offers legal advice **service on immigration and international protection** to accompany you throughout the administrative process related to immigration and/or issues related to the homologation of degrees, nationality, etc..

This service includes translations to different languages if necessary.

To request an appointment, please contact the Servicio de Primera Acogida (First Integration Service).



FIRST ADMITTANCE SERVICE

Where you can find us

- 🏠 Person Services Area
- 📍 Avinguda de Barcelona, 41
- ☎ 93 477 00 51
- ✉ acollida@santjoandespi.cat

To learn more you can consult

<https://sjdespi.cat/la-ciutat-temes/cooperacio-i-novaciudadania/servei-dacollida-persones-nouvingudes>

Ongi etorri

Benvidos,
Benvidas

Bienvenus,
Bienvenues

مرحبا

Benvinguts,
Benvingudes

Bine ati venit

Bienvenidos,
Bienvenidas

欢迎

Добро
пожаловать

Bem-vindos,
Bem-vindas

Welcome

Public healthcare system



Access to public healthcare is a fundamental and universal human right (art. 25 of the Universal Declaration of Human Rights). All persons residing in Catalonia are guaranteed healthcare (Law 9/2017, 27 June, on the universalization of healthcare)².

The primary care center (CAP) is the place to go when you have a health problem or want to prevent a disease. Other healthcare services (hospitals, specialists) are referred through the primary care

061 SALUT RESPON (Healthcare Response) is a free telephone service to solve questions or healthcare problems.

The public healthcare system is financed by the taxes paid by all the people who live in Spain, therefore, access is free. In order to receive such service it you need a Targeta Sanitària (Healthcare Card). All persons registered in the census, with or without a residence permit, can obtain it. It must be requested at the primary care center (CAP).

Healthcare services:

CAP Verdaguer

📍 Carrer de la Creu d'en Muntaner, s/n

☎ 93 373 56 53

(If you live in Centre, Residencial Sant Joan or les Begudes neighborhoods)

CAP Les Planes

📍 Avinguda de Barcelona, 62

☎ 93 477 51 51

(If you live in the neighborhood of Les Planes or Torreblanca)

Programming visits to the CAP:

☎ 93 567 09 99

💻 www.gencat.cat/ics

🕒 Operating hours for primary care centers:
from Monday thru Sunday from 8 am to 8 pm

For other hours you can contact the **CUAP Sant Ildefons**

📍 Avinguda de la República Argentina, s/n,
Cornellà de Llobregat

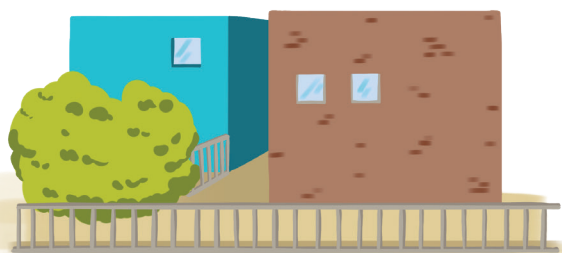
☎ 93 471 16 88

If it is a more serious pathology, go to the emergency room of the **Moisés Broggi Hospital**

📍 Carrer d'Oriol Martorell, 12

☎ 93 553 12 00

In case of serious emergency always call 112.



² <https://portaljuridic.gencat.cat/ca/document-del-pjur/?documentId=791144>

Schooling infants and children



Education is a fundamental human right and is therefore universal (art. 26 of the Universal Declaration of Human Rights). All people living in Catalonia are guaranteed compulsory education.

Infantile	ESCOLES BRESSOL	0-3
	INFANTILE	
Obligatory	INFANTILE	3-6
	PRIMARY	6-12
	ESO	12-16
Post-compulsory	HIGH SCHOOL	16-18
	TRAINING COURSES	

Enrollment:

To enroll children in public nursery schools (0-3 years), please contact the Department of Education, Childhood and Families of the Sant Joan Despí City Council.

To enroll children and young people in any of the compulsory and post-compulsory educational stages it is necessary to pre-enroll digitally at **preinscripcio.gencat.cat** (the ordinary process, for the obligatory stages, is the month of March and for the rest of the stages in May).

The school calendar starts in September and ends in June. It is divided into three terms, marked by the holidays of Christmas (December- January), Easter (March-April) and summer (July and August).

The school lunchroom is a complementary service and not compulsory. It has an economic cost for families. The usual timetable for kindergarten and primary school students is from 12:30 / 13:00 to 15:00.

For any questions or doubts you can contact the school where you want to send your child or youngster or the Education Department of the City Council.

EDUCATION, CHILDHOOD AND FAMILIES DEPARTMENT:

- 🏠 Person Services Area
- 📍 Avinguda de Barcelona, 41
- ☎ 93 477 00 51
- ✉ educacio@santjoandespi.cat

To learn more you can consult

🖥 <https://sjdespi.cat/la-ciutat-per-temes/educacio>





Learning catalan and spanish

To live and work in the city it is essential to know both Catalan and Spanish. Various institutions and organizations organize courses at different levels for both.

ADULT EDUCATION CENTER (Catalan and Spanish courses)

Where you can find us

- 📍 Carrer del Tambor del Bruc, 2
- ☎ 93 373 67 58
- ✉ cfajujol@xtec.cat
- 🕒 From Monday to Friday from 9:30 a.m. to 1:30 p.m. and from 3 to 6 p.m.
- 💻 www.xtec.cat/cfajujol

LOCAL CATALAN SERVICE (Catalan courses)

It offers courses in spoken and written Catalan, both in person and remotely, and actions to promote the Catalan language, such as language Volunteers (Voluntariat per la llengua), which will allow you to practice conversing in Catalan.

Where you can find us

- 🏠 Person Services Area
- 📍 Avinguda de Barcelona, 41
- ☎ 93 477 00 92 i 664 41 19 47
- ✉ santjoandespi@cpnl.cat
- 👤 Registration: www.cpnl.cat/inscripciones



Training

Specialized training is a key element to better focus your professional future and obtain more opportunities. In Sant Joan Despí, you will find a very diverse and high-quality educational offer. From high school - taught at the Jaume Salvador i Pedrol, and Francesc Ferrer i Guàrdia high schools - to vocational training, adult education and occupational training.

ECONOMIC PROMOTION

The Department of Economic Promotion (Promodespí) offers training and employment services to citizens and promotes the entrepreneurial spirit throughout life.

Promodespí offers different occupational training courses in sectors such as administration, healthcare, languages, digital skills and job search skills.

Where you can find us

- 📍 Carrer de John F. Kennedy, 4
- 📞 93 480 80 50
- ✉ promocio@santjoandespi.cat
- 🕒 From Monday to Friday from 9 a.m. to 1:30 p.m. and from 4:30 p.m. to 7 p.m.
- ✉ promocio@santjoandespi.cat
- 💻 <https://promodespi.cat/formacio>

ADULT EDUCATION CENTER ARQUITECTE JUJOL

It is a school of regulated studies for people over 18 years old. It offers preparation for entrance exams to regulated studies, school graduation, digital skills and language courses.

Where you can find us

- 📍 Carrer del Tambor del Bruc, 2
- 📞 93 373 67 58
- ✉ cfajujol@xtec.cat
- 🕒 From Monday to Friday from 9.30 a.m. to 1 p.m. and from 3 to 6 p.m.
- 💻 www.xtec.cat/cfajujol



INSTITUT FRANCESC FERRER I GUÀRDIA

It is a school of regulated studies for people over 18 years old. It offers preparation for entrance exams to regulated studies, school graduation, digital skills and language courses.

Where you can find us

- 📍 Avinguda de la Generalitat, 30
- 📞 93 373 82 09
- ✉ iesffg@xtec.cat
- 💻 www.iesffg.cat

SOLIDANÇA

It is a third sector entity that offers free training courses: waste management, warehouse assistant, mobile phone and tablet repair, household appliance repair, etc.

Where you can find us

- 📍 Raval de les Begudes, 25
- 📞 93 685 44 34
- ✉ solidan@solidanca.cat
- 💻 <https://solidanca.cat>





PÀ

Educació

Cultura

Esport

Joventut

Promoció

Solidaritat

Turisme

català

LGTBI

Associació

Gent Gr

Acció s

Arxiu

DON
i de ma
MUSEU DE L'ART DE

Job Searching



Foreigners with a residence and work permit can apply for work and/or follow a job training program. To do so, they must first register as job seekers with the Servei Públic d'Ocupació (Public Employment Service) de Catalunya.

To be able to work it is necessary to be over 18 years old, although it is possible to work from the age of 16 with the permission of parents or legal guardians.

At the Department of Economic Promotion (Promodespí) (Economic Promotion Department) they can help you prepare your curriculum, search for a job, do occupational and professional training or give you advice on how to open a business (shop, company...)

JOB CLUB

Club de feina is a place where users may exchange ideas with each other and with Promodespí. Materials and resources for the occupation-related recreation can be found here.

Additionally, this space has technical staff who provide information and assessment to users based on their needs.

🕒 From Monday to Friday from 9.30 a.m. to 1 p.m.
Sundays from 16.30 to 19 h

EMPLOYMENT AGENCY

People registered as job seekers at the Servei d'Ocupació de Catalunya (SOC) (Employment Service of Catalonia), have access to the Local Employment Agency (Xarxa Xaloc - Xaloc Network) and its job offers.

To register you must fill out the form for a first interview at

<https://formularis.diba.cat/diba/el/sollicitud-contacte-amb-servei-local-ocupacio>

Where you can find us

📍 Carrer de John F. Kennedy, 8
☎ 93 480 80 50
✉ promocio@santjoandespi.cat

🕒 From Monday to Friday from 9 a.m. to 1 p.m.
and from 16:30 to 19 h

To learn more you can consult

🖥 <https://promodespi.cat/>

Other resources for job searching

SOLIDARITY

It is an entity that also has an Employment Agency and Job Club service (curriculum, interview preparation) with computers and technical advice.

Where you can find us

📍 Raval de les Begudes, 25
☎ 93 685 44 34
✉ incorpora@solidanca.cat

RED CROSS

Entity that has a counseling service, pre-employment and employment guidance and job placement.

Where you can find us

📍 Carrer del Samontà, 31
☎ 93 373 37 58





Degree Homologation

To homologate is to recognize the validity of a degree as if it had been studied in Catalonia. It qualifies professionally and allows one to continue other studies.

To validate means to declare valid studies done abroad in order to continue studying in Catalonia.

All studies from foreign non-university education systems can be validated, except for languages.



Where to go?

INFORMATION TELEPHONE 012

For inquiries about:

- Homologation and validations of foreign degrees
- Legalization of academic documents
- Schooling (family consultations)
- Lunch allowances, scholarships and other allowances/benefits
- Qualifications and academic documentation
- Teaching and administrative and service staff employment positions
- Oposicions (competitive examinations)

EDUCATION CONSORTIUM SERVICE OFFICE OF BARCELONA

- 📍 Plaça d'Urquinaona, 6
(corner of Carrer de Roger de Llúria 1-3) 08010 Barcelona
- ☎ 93 551 10 00
- 🕒 From Monday to Sunday from 8.30 a.m. to 5 p.m.
Sundays and holidays from 8.30 a.m. to 2 p.m.
- 💻 www.edubcn.cat/ca/el_consortici

UNIVERSITY SUPPORT AND RECOGNITION SERVICE

The University Support and Recognition Service (SARU) provides personalized information and support in the process of recognition of foreign university degrees in order to be accepted and effective in Spain.

- 💻 <https://igualtat.gencat.cat/ca/ambits-dactuacio/antiracisme-migracions-i-refugi/serveis/servei-dacompanyament-al-reconeixement-universitari/>

Basic social services

If you need information, guidance and social assistance for basic needs (employment, food) or about dependency, elderly or children, please contact the municipal social services.

The social services are located in the civic centers of Les Planes (for the neighbors of Les Planes and Residencial Sant Joan neighborhoods) and Sant Pancraç (for the neighbors of Torreblanca, Centre and Les Begudes)

Where you can find us

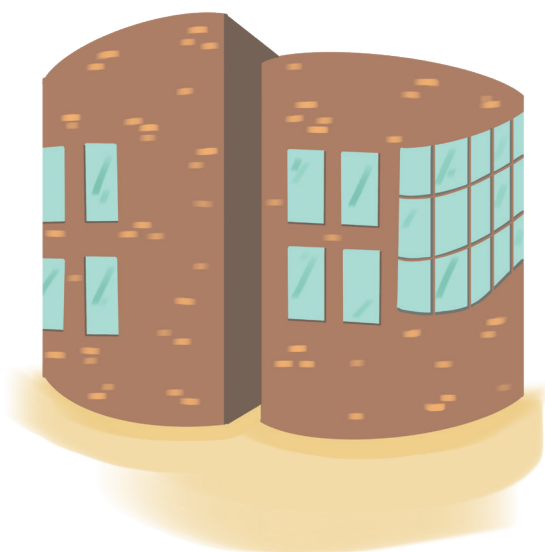
To request an appointment, one must go in person to the civic center that corresponds to you.

Les Planes Civic Center

📍 Carrer John F. Kennedy, 4
☎ 93 477 01 37

Sant Pancraç Civic Center

📍 Passeig del Canal, 2
☎ 93 477 12 11



DESPÍ WOMEN'S CENTER

It is a meeting place to respond to all the needs of the women of Sant Joan Despí with the aim of promoting the processes of women's autonomy and contribute to overcoming all situations of inequality.

Offers information and counseling services on topics of interest (psychological and legal assistance and support and attention to gender violence)...

Where you can find us

- 🏠 Les Planes Civic Center
(Ground floor)
- 📍 Carrer de John F. Kennedy, 4
- ☎ 93 480 60 21
- ✉ donesdespi@santjoandespi.cat
- 🕒 From Monday to Friday from 9 a.m. to 2 p.m.
Sundays and Sundays from 5 to 7 p.m

COMPREHENSIVE CARE SERVICE (SAI)

The Comprehensive Care Service (SAI) LGTBI (LGBTI) is an essential resource for all people and organizations interested in sexual orientation, gender expression and gender identity. It is a point of reference and support for the LGTBI (LGBTI) community, as well as for family and friends and aims to fight against LGTBI phobia and promote inclusion and respect.

Where you can find us

- 🏠 Rovira House
(access from the ground floor of the Oficina Jove)
- 📍 Carrer de Jacint Verdaguer, 27
- ☎ 93 477 17 62
- ✉ lgtbi@santjoandespi.cat
- 🕒 Tuesdays from 16 pm to 20 pm

Enjoy and participate in the city

- In Sant Joan Despí, **you will find leisure activities for everyone**: courses, workshops, cultural activities, theater, shows and concerts, spaces for sports, outdoor activities, shopping and gastronomy.
- Various entities of the city offer extracurricular activities for children during afternoons, weekends and campuses and centers during school holidays (students' family alumni associations, clubs, cultural and sports organizations...).
- Sant Joan Despí has two facilities for information, activities and socialization for young people: the **Bulevard casal de joves** (youth center), where you will find workshops and activities, and the **l'Oficina Jove** (Youth Office), where they offer counseling and information services and care for young people between ages 12 and 35.
- The city has the Centre de Gent Gran Cirerers (Senior Citizens Center) that offers activities for people over 65 years old.
- **The Miquel Martí i Pol and Mercè Rodoreda Libraries** are quiet and pleasant places where you can spend a good time reading, studying or surfing the Internet for free. They have a documentary collection in different languages.
- You can go to the **4 Civic Centers** of the city: Antoni Gaudí, Les Planes, Sant Pancraç and Torreblanca to enjoy cultural and educational activities and to contact municipal entities and services.
- Sant Joan Despí has different places of worship that reflect the diversity of the population of Sant Joan Despí (Islamic Cultural Center, Evangelical Church, Carmen Parish, Church of Sant JoanBaptista).
- In Sant Joan Despí there are no large commercial malls, there is a clear commitment to **local commerce**, the urban commerce that makes the city's atmosphere. Most of the neighborhood shops close at midday and are also closed on Saturday afternoons and closed all day on Sundays.
- To keep the city clean and fight against climate change, **waste recycling** is essential. Each type of waste has a container: paper in blue, glass in green, packaging in yellow, organic in brown, rest of waste in grey. Special waste (used oil, batteries, light bulbs, electronic devices) is deposited in the mobile waste collection that passes through the different neighborhoods. If you have to throw away any bulky furniture, you must notify the City Council (93 480 60 00) or take it to the La Font Santa dump (av. del Baix Llobregat with c. Àngel Guimerà - tel. 93 371 57 46).
- For a good **neighborhood coexistence**, it is essential that everyone respects the rules of civility. For example, try to avoid making noises before 8 am or after 11 pm.
- It is necessary that we all take care and keep the public space clean.
- As a neighbor, you can't miss the **local festivities**: Tres Tombs (February-March), Carnestoltes (February), Sant Jordi (April), the Festa Major de Sant Joan Despí (June 24) and Christmas (December-January).
- Each neighborhood celebrates its own festivities organized by the neighborhood associations and other local entities.
- Sant Joan Despí has a **network of organizations** that offer support, guidance and important services for the admittance and the process of inclusion of new neighbors. You can contact them through the Servei d'Acollida (Integration Service).
- Sant Joan Despí has a quarterly program of quality **theater** designed for all audiences. You can enjoy plays, music and family shows: www.teatresdespi.cat.
- Sant Joan Despí has approximately 231.000 square meters of **squares, green areas and parks**, to which we must add the 365 hectares of the agricultural area. You can enjoy nature in the Torreblanca and Font Santa Parks, or on the banks of the Llobregat River.
- **Sports** in Sant Joan Despí have a special relevance: there is a wide and varied network of sports facilities: Salvador Gimeno and Francesc Calvet Sports Centers, Soccer Camps, Tennis Courts, Font Santa outdoor swimming pool (during the summer months), and many entities that promote practicing sports.

Telephone numbers of interest

Sant Joan Despí City Council

☎ 93 480 60 00

Person Services Area

☎ 93 477 00 51

Local Police

☎ 93 480 60 10

Consultations on healthcare issues

☎ 061 Salut Respon

☎ 112 in case of emergency

In case of experiencing or witnessing cases of gender violence

☎ 900 900 120





AJUNTAMENT DE
SANT JOAN DESPÍ

-  Camí del Mig, 9
-  93 480 60 00
-  ajuntament@santjoandespi.cat
-  sjdespi.cat
-  [@ajuntamentsantjoandespi](https://www.instagram.com/ajuntamentsantjoandespi)
-  [@ajuntamentsjdespi](https://www.facebook.com/ajuntamentsjdespi)
-  [@despitelevisio](https://www.youtube.com/despitelevisio)